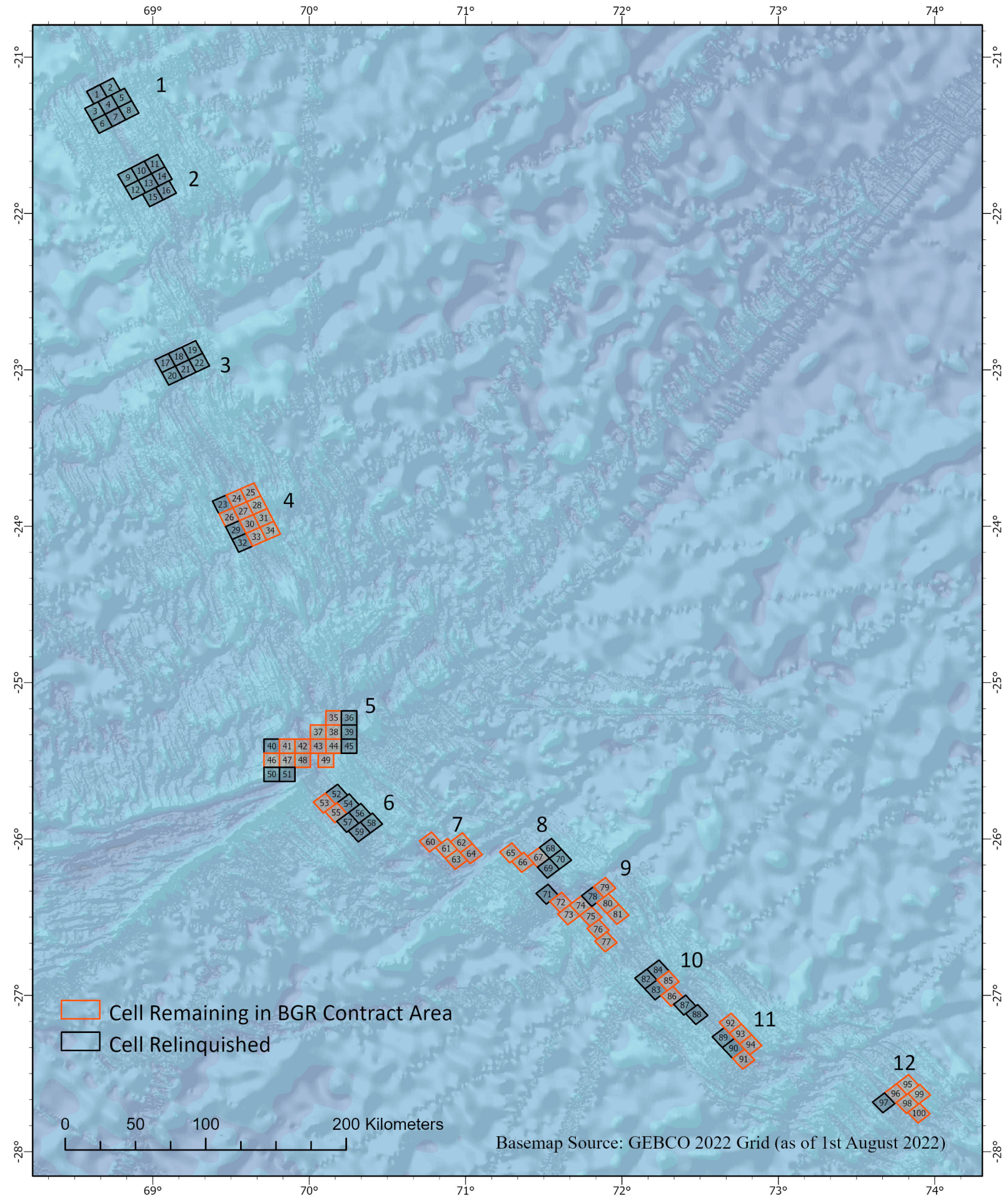


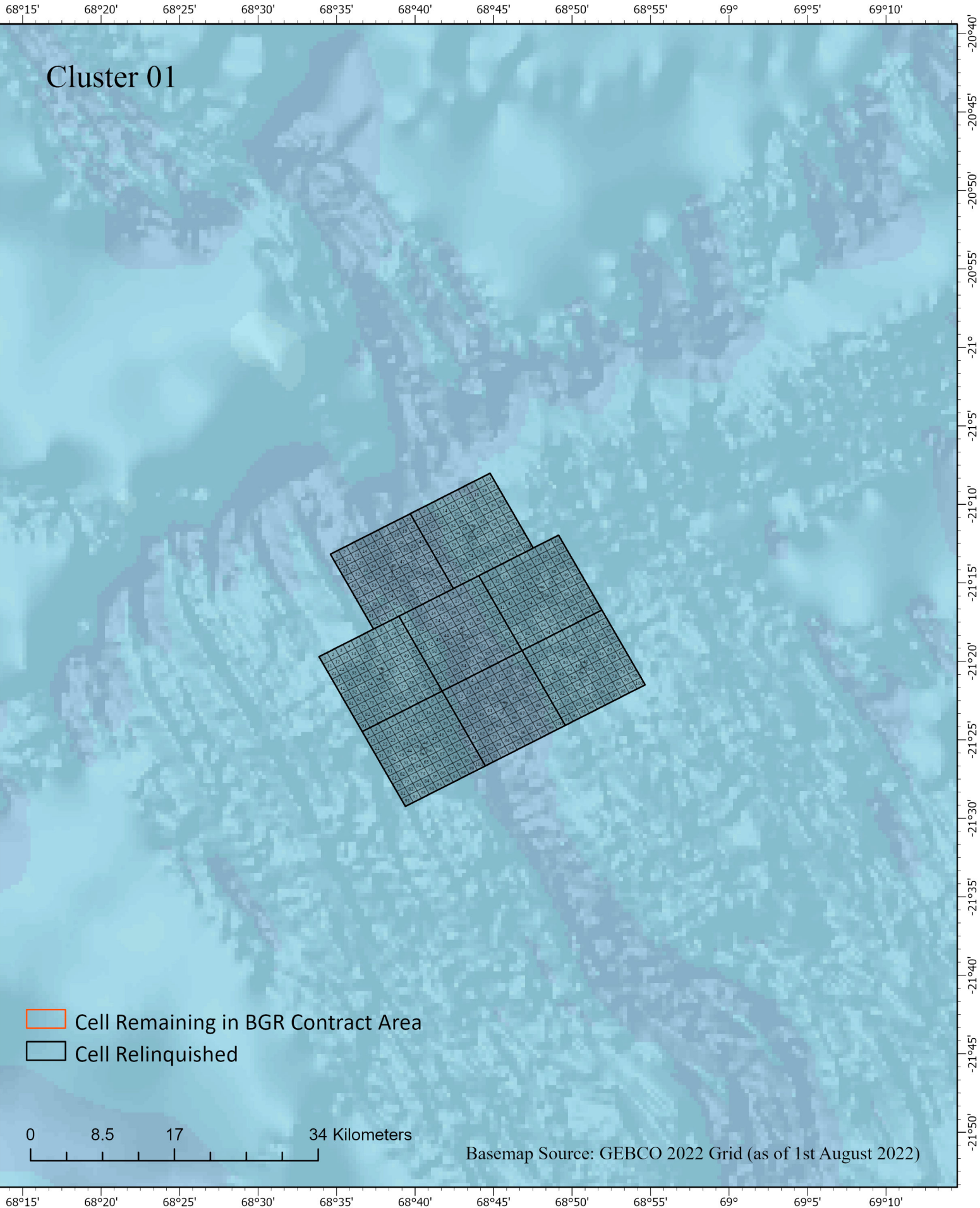
# BGRPMS1 INDEX Exploration for Polymetallic Sulphides

## 1st Relinquishment of 50% in 2024



# BGRPMS1 INDEX Exploration for Polymetallic Sulphides

## 1st Relinquishment of 50% in 2024



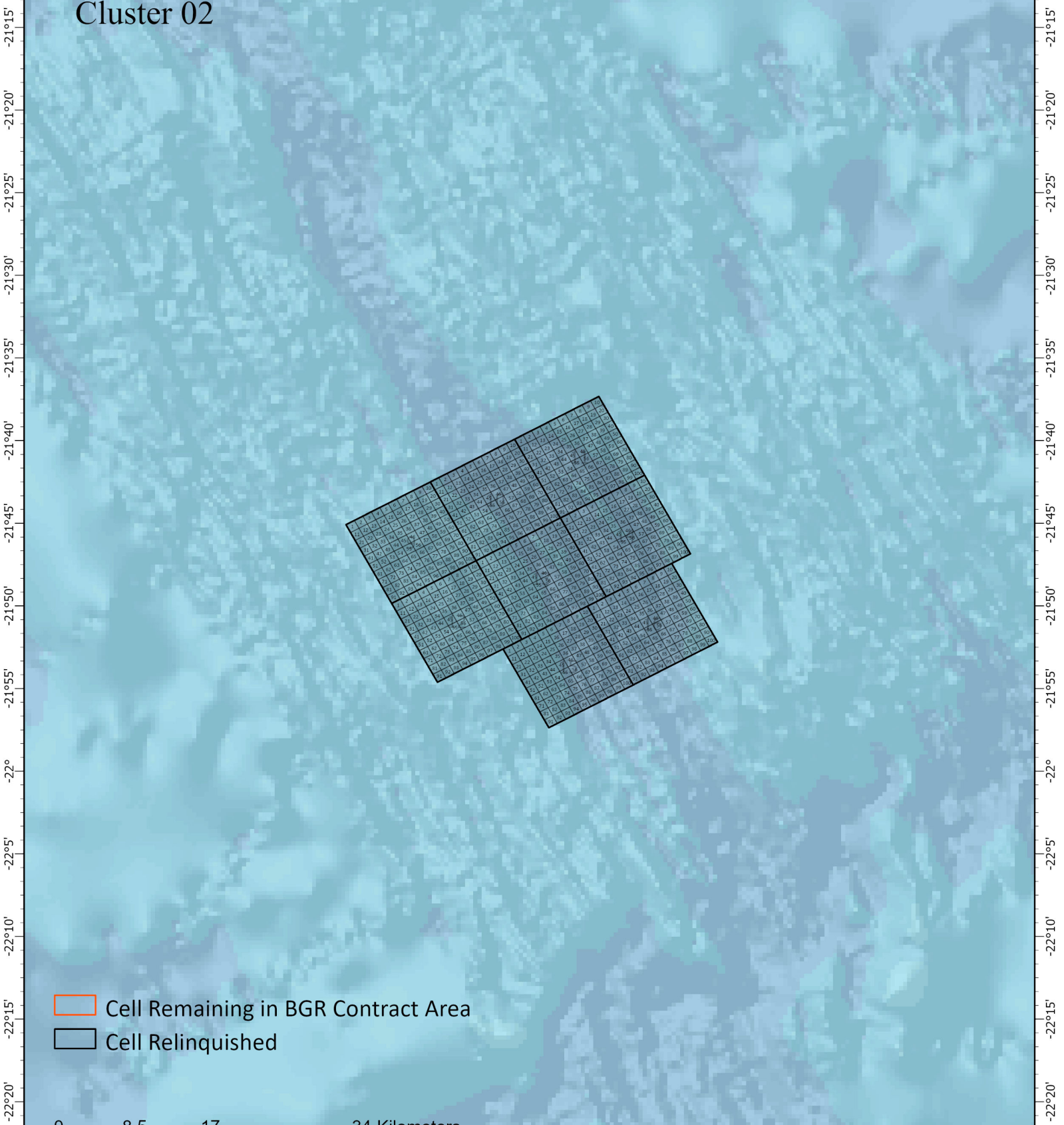
# BGRPMS1 INDEX Exploration for Polymetallic Sulphides

## 1st Relinquishment of 50% in 2024



68°30' 68°35' 68°40' 68°45' 68°50' 68°55' 69° 69°5' 69°10' 69°15' 69°20' 69°25'

Cluster 02



-  Cell Remaining in BGR Contract Area
-  Cell Relinquished

0 8.5 17 34 Kilometers

Basemap Source: GEBCO 2022 Grid (as of 1st August 2022)

68°30' 68°35' 68°40' 68°45' 68°50' 68°55' 69° 69°5' 69°10' 69°15' 69°20' 69°25'

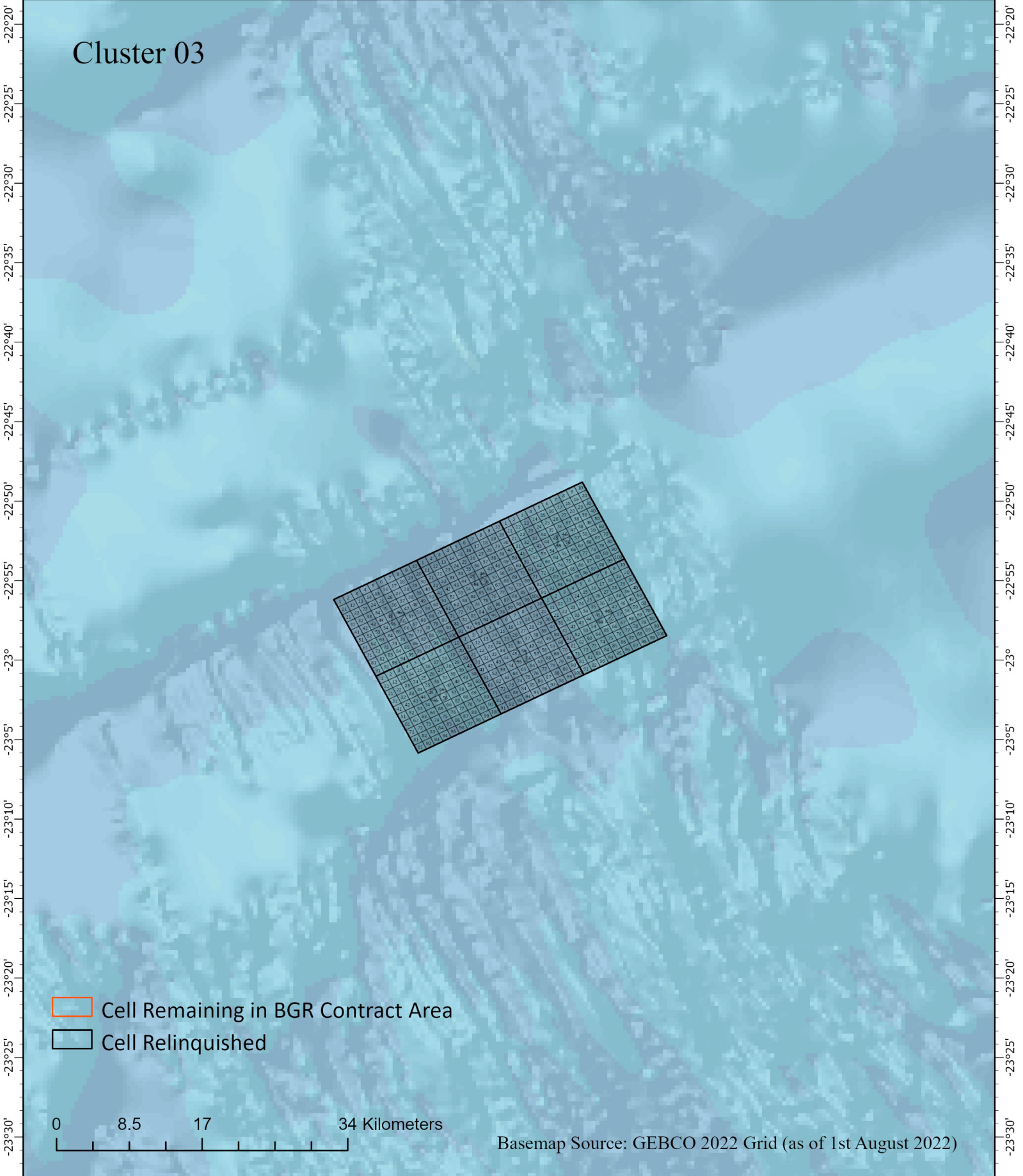
# BGRPMS1 INDEX Exploration for Polymetallic Sulphides

## 1st Relinquishment of 50% in 2024



68°45' 68°50' 68°55' 69° 69°5' 69°10' 69°15' 69°20' 69°25' 69°30' 69°35' 69°40'

Cluster 03



-  Cell Remaining in BGR Contract Area
-  Cell Relinquished

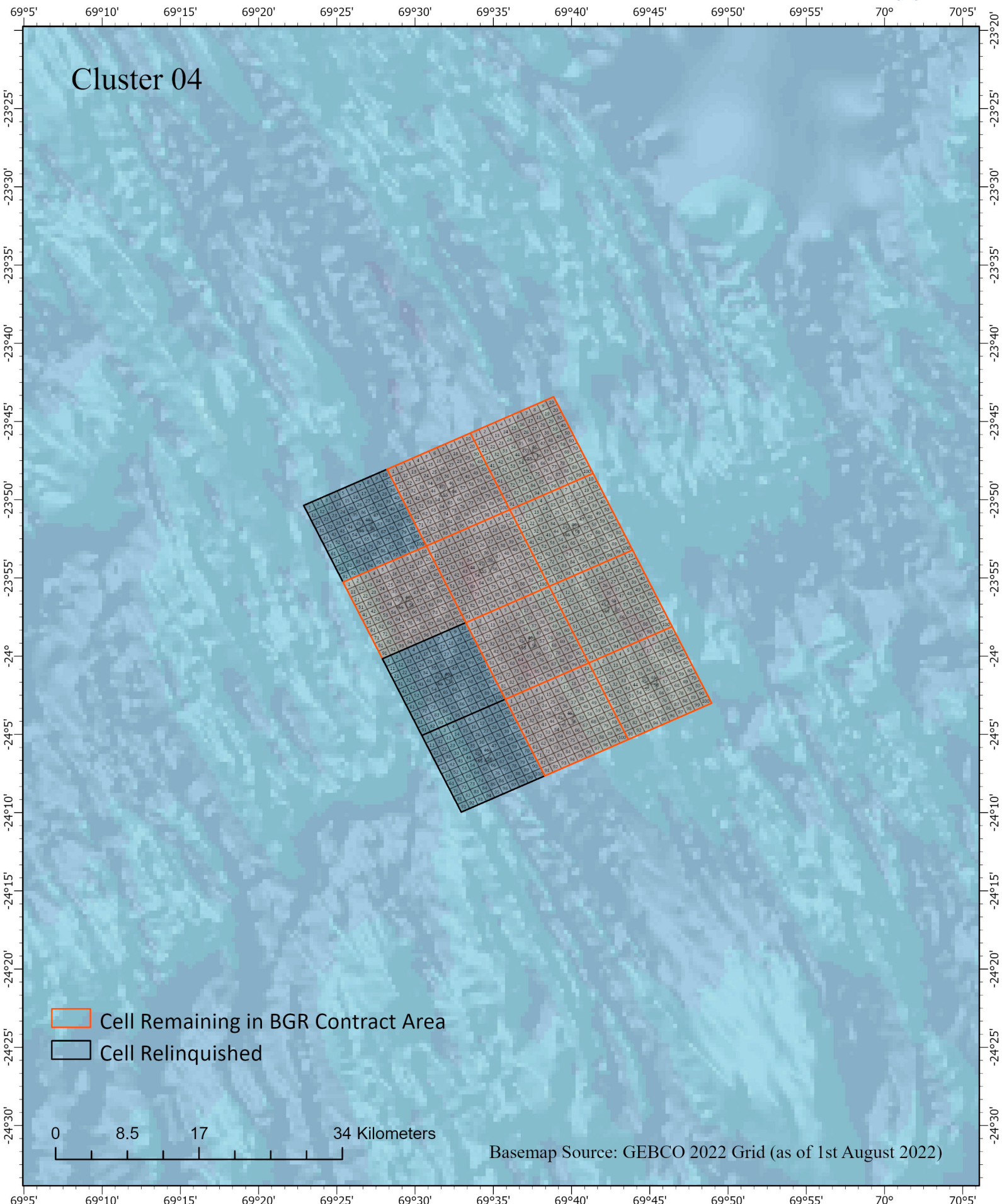
0 8.5 17 34 Kilometers

Basemap Source: GEBCO 2022 Grid (as of 1st August 2022)



68°45' 68°50' 68°55' 69° 69°5' 69°10' 69°15' 69°20' 69°25' 69°30' 69°35' 69°40'

# BGRPMS1 INDEX Exploration for Polymetallic Sulphides

## 1st Relinquishment of 50% in 2024



Cluster 04

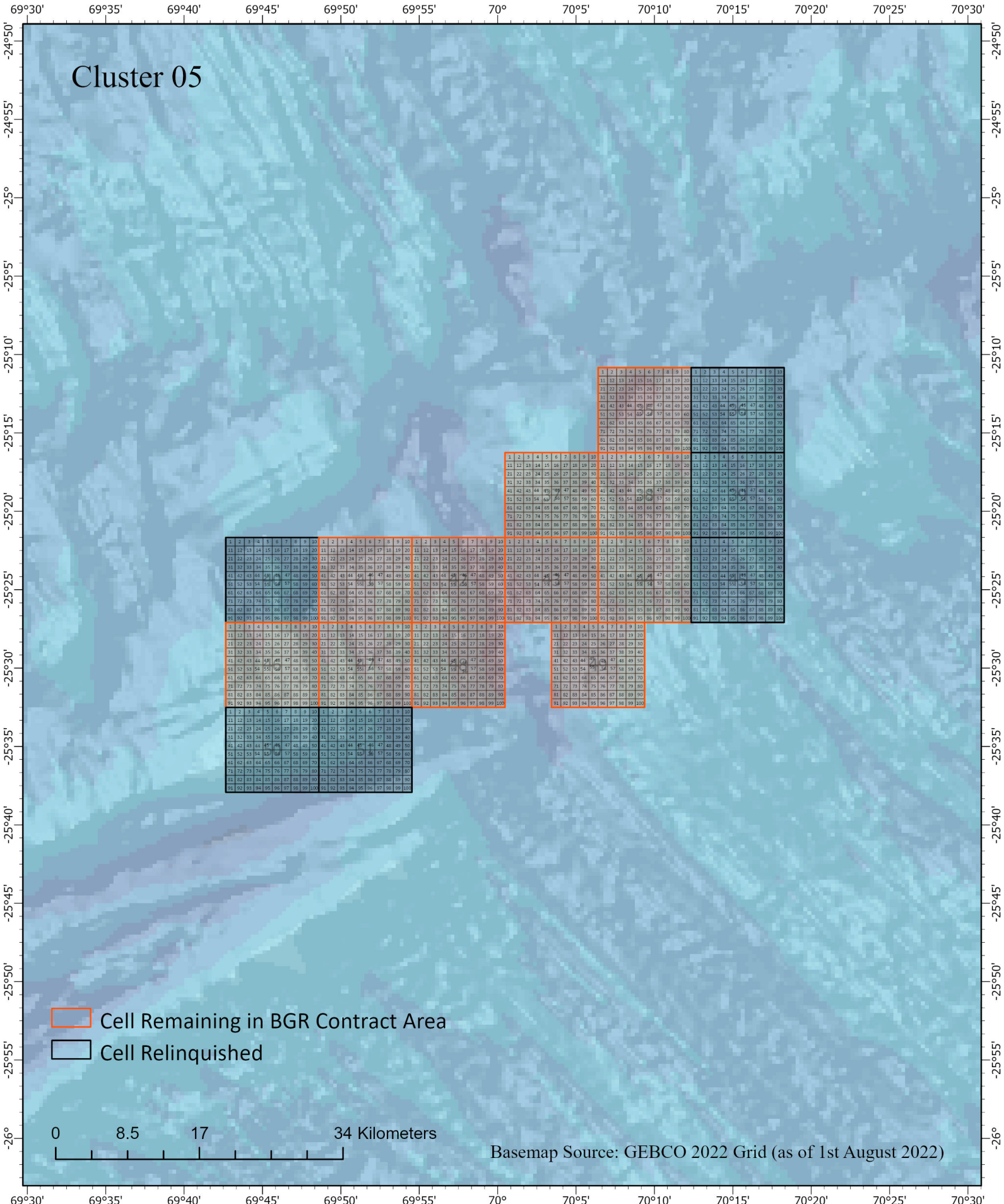
-  Cell Remaining in BGR Contract Area
-  Cell Relinquished

0 8.5 17 34 Kilometers


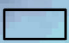
Basemap Source: GEBCO 2022 Grid (as of 1st August 2022)

# BGRPMS1 INDEX Exploration for Polymetallic Sulphides

## 1st Relinquishment of 50% in 2024



Cluster 05

-  Cell Remaining in BGR Contract Area
-  Cell Relinquished

0 8.5 17 34 Kilometers

Basemap Source: GEBCO 2022 Grid (as of 1st August 2022)

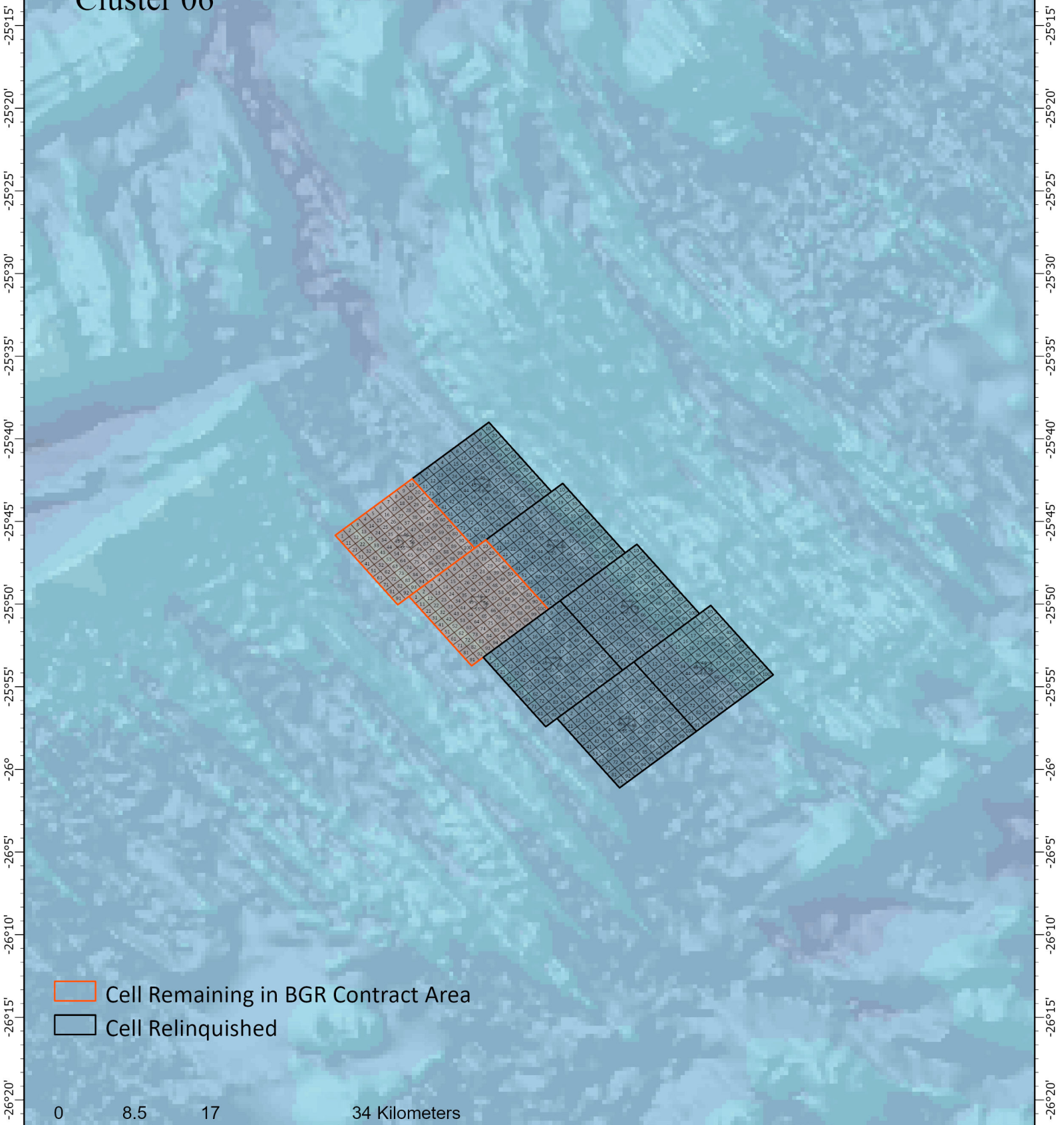
# BGRPMS1 INDEX Exploration for Polymetallic Sulphides

## 1st Relinquishment of 50% in 2024



69°45' 69°50' 69°55' 70° 70°5' 70°10' 70°15' 70°20' 70°25' 70°30' 70°35' 70°40'

Cluster 06



-  Cell Remaining in BGR Contract Area
-  Cell Relinquished

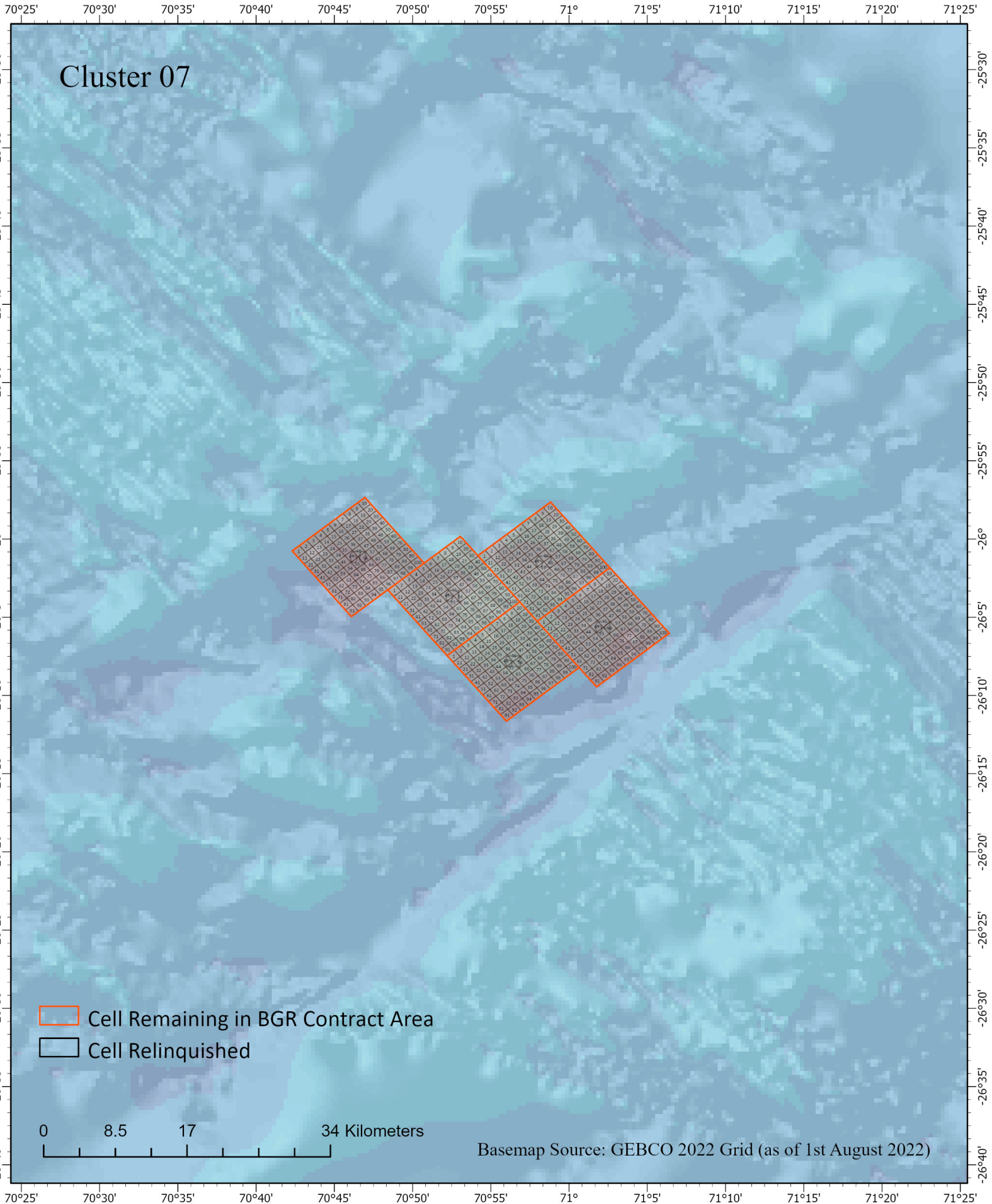
0 8.5 17 34 Kilometers

Basemap Source: GEBCO 2022 Grid (as of 1st August 2022)

69°45' 69°50' 69°55' 70° 70°5' 70°10' 70°15' 70°20' 70°25' 70°30' 70°35' 70°40'

# BGRPMS1 INDEX Exploration for Polymetallic Sulphides

## 1st Relinquishment of 50% in 2024





# BGRPMS1 INDEX Exploration for Polymetallic Sulphides

## 1st Relinquishment of 50% in 2024



Cluster 08

-  Cell Remaining in BGR Contract Area
-  Cell Relinquished

0 8.5 17 34 Kilometers


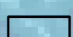
Basemap Source: GEBCO 2022 Grid (as of 1st August 2022)

# BGRPMS1 INDEX Exploration for Polymetallic Sulphides

## 1st Relinquishment of 50% in 2024

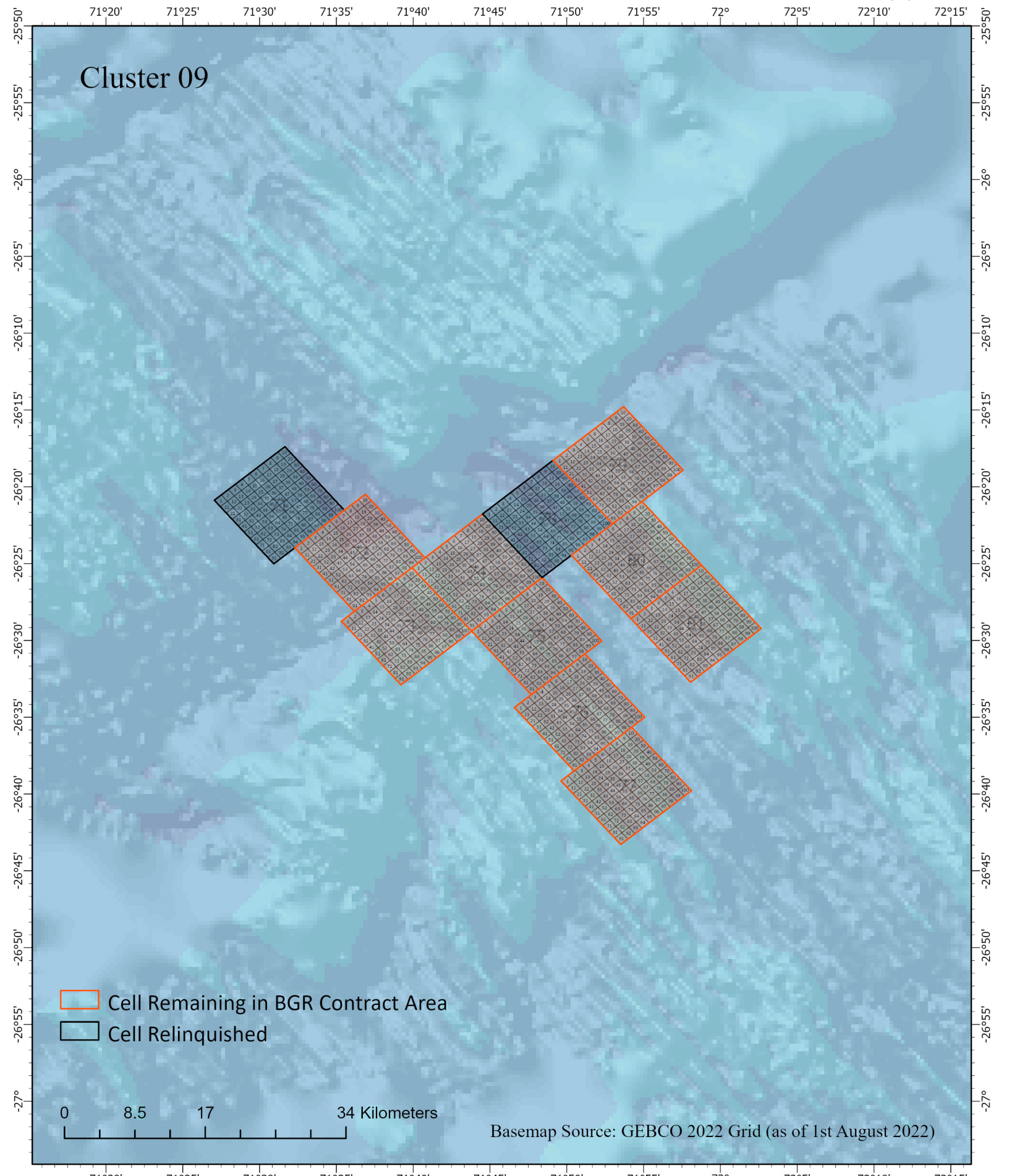


Cluster 09

-  Cell Remaining in BGR Contract Area
-  Cell Relinquished

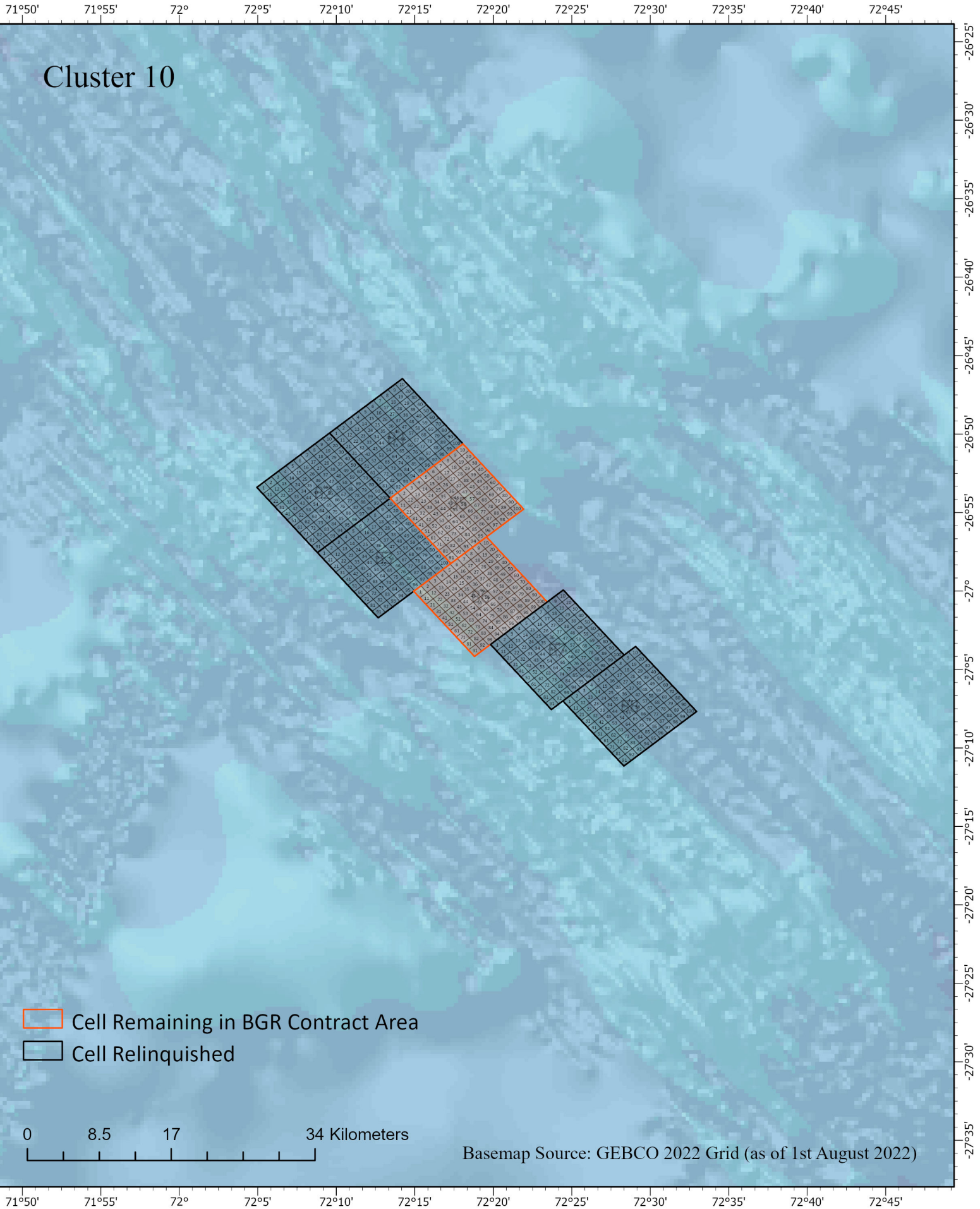
0 8.5 17 34 Kilometers

Basemap Source: GEBCO 2022 Grid (as of 1st August 2022)



# BGRPMS1 INDEX Exploration for Polymetallic Sulphides

## 1st Relinquishment of 50% in 2024



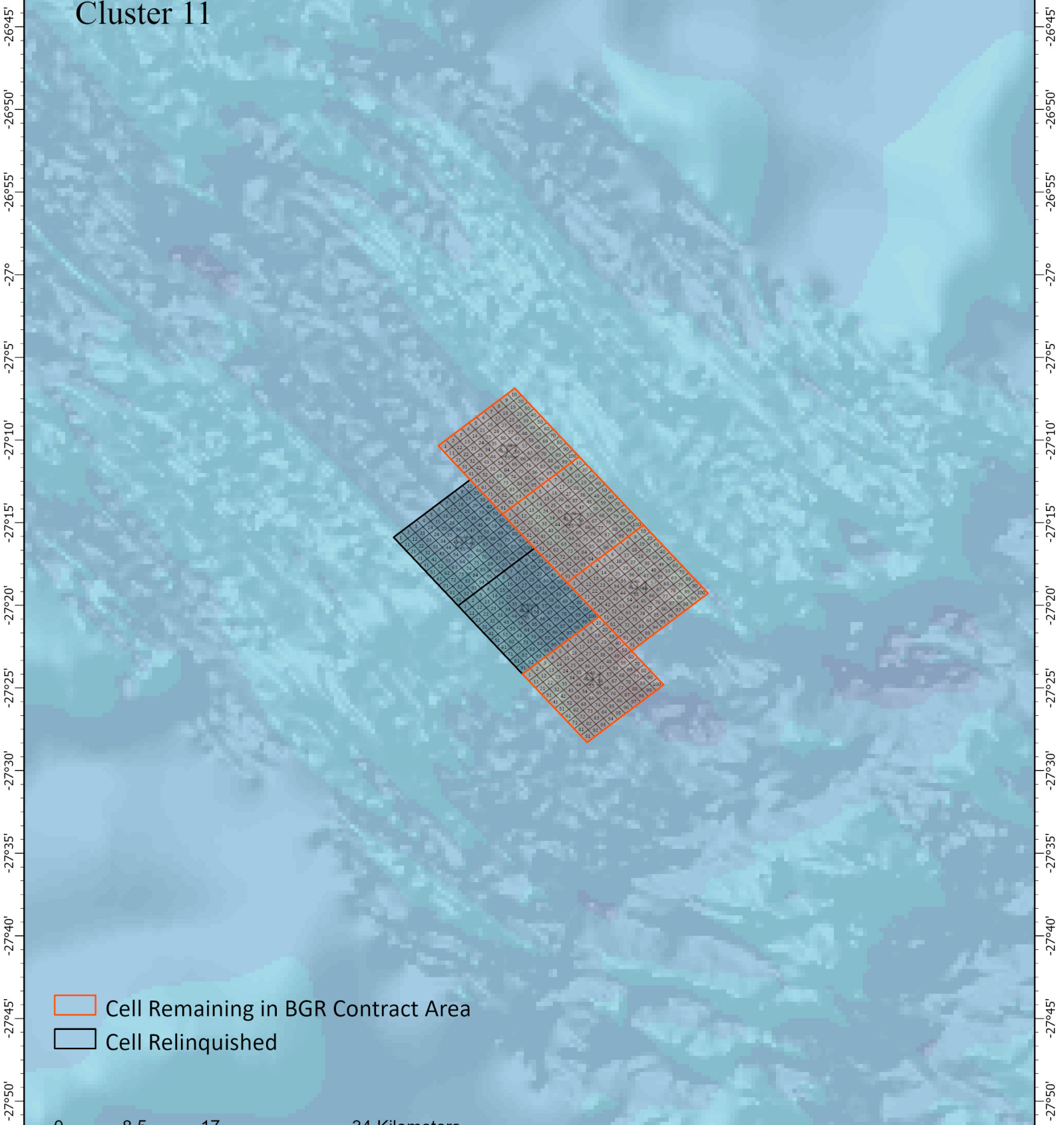
# BGRPMS1 INDEX Exploration for Polymetallic Sulphides



## 1st Relinquishment of 50% in 2024



72°15' 72°20' 72°25' 72°30' 72°35' 72°40' 72°45' 72°50' 72°55' 73° 73°5' 73°10'

Cluster 11



-  Cell Remaining in BGR Contract Area
-  Cell Relinquished

0 8.5 17 34 Kilometers

Basemap Source: GEBCO 2022 Grid (as of 1st August 2022)

72°15' 72°20' 72°25' 72°30' 72°35' 72°40' 72°45' 72°50' 72°55' 73° 73°5' 73°10'

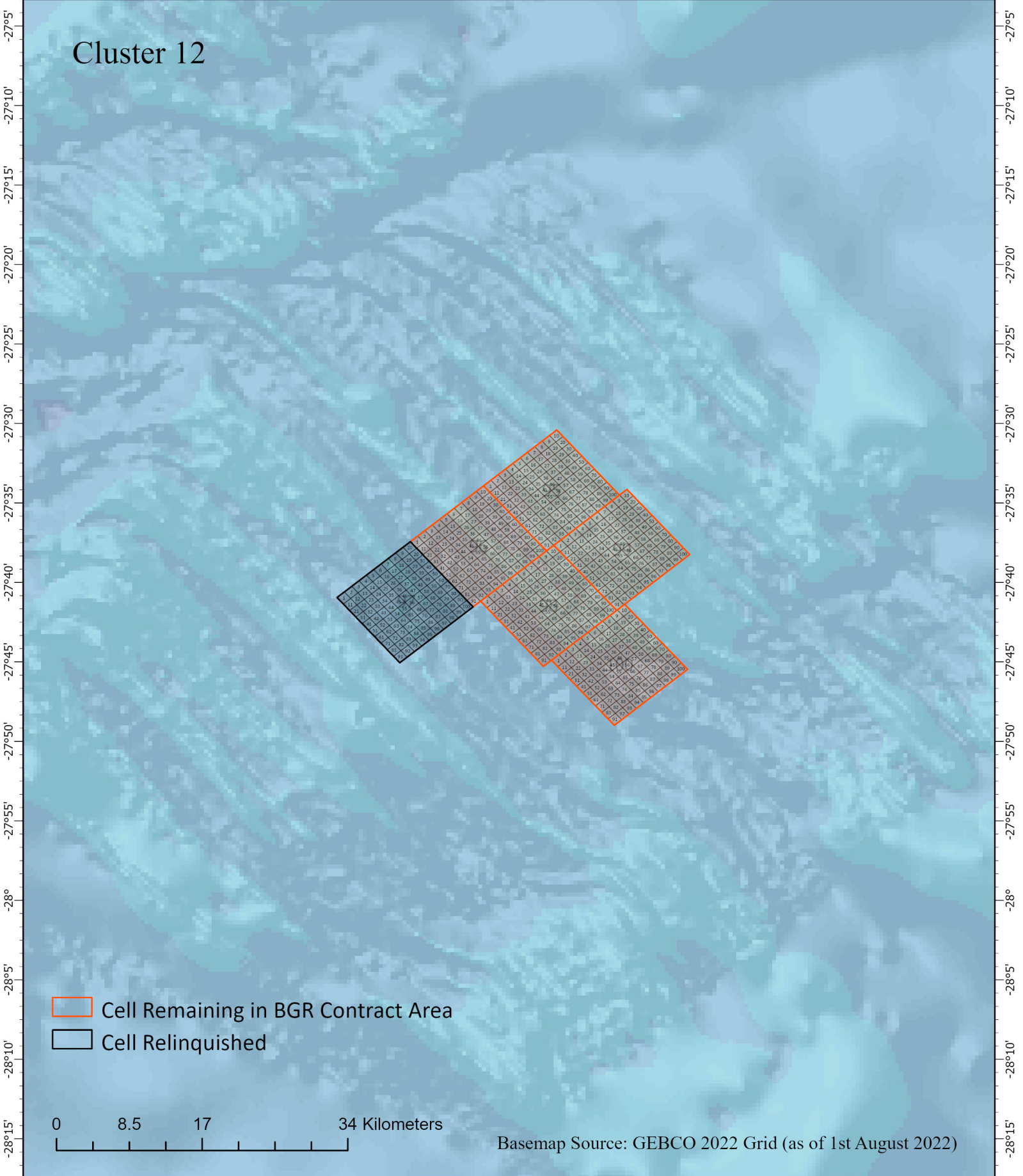
# BGRPMS1 INDEX Exploration for Polymetallic Sulphides

## 1st Relinquishment of 50% in 2024



73°20' 73°25' 73°30' 73°35' 73°40' 73°45' 73°50' 73°55' 74° 74°5' 74°10' 74°15'

Cluster 12



-  Cell Remaining in BGR Contract Area
-  Cell Relinquished

0 8.5 17 34 Kilometers

Basemap Source: GEBCO 2022 Grid (as of 1st August 2022)

73°20' 73°25' 73°30' 73°35' 73°40' 73°45' 73°50' 73°55' 74° 74°5' 74°10' 74°15'