



WORKSHOP ON THE RESULTS OF A PROJECT TO
DEVELOP A GEOLOGICAL MODEL OF POLYMETALLIC NODULE
DEPOSITS IN THE CLARION-CLIPPERTON ZONE
KINGSTON, JAMAICA

14-17 DECEMBER, 2009

AGENDA

MONDAY, 14 DECEMBER, 2009

09:30-10:30 REGISTRATION OF PARTICIPANTS

10:30- 11:00 OPENING SESSION

- *Welcome & Opening remarks: H.E. Nii Allotey Odunton, Secretary-General, International Seabed Authority (ISA)*
- *Outline of the workshop and objectives of the geological model project Mr. James A.R. McFarlane, Head, Office of Resource and Environmental Monitoring, ISA*

11:00-11:30 COFFEE BREAK

SESSION: MODEL DEVELOPMENT AND KEY RESULTS

11:30-12:15 PROJECT IMPLEMENTATION

- *Dr. Charles Morgan, Planning Solutions Inc., Hawaii USA*

12:15-13:30 REVIEW OF DATA USED FOR THE MODEL

- *Vijay Kodagali, Senior Scientific Affairs Officer, ISA*

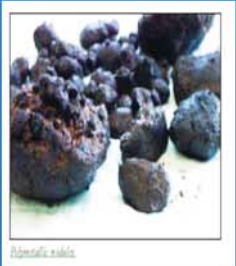
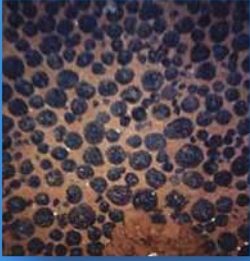
13:30-14:30 LUNCH BREAK

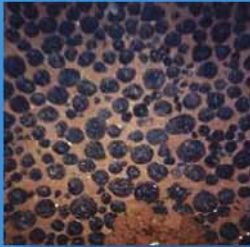
14:30-15:15 BATHYMETRY AND BASE MAP

- *Prof. Lindsay Parsons National Oceanography Centre, Southampton, UK*

15:15-16:00 ANALYSIS OF VOLCANIC AND STRUCTURAL ELEMENTS OF CLARION-CLIPPERTON ZONE

- *Dr. Valery Yubko, Yuzhmoregeologiya, Russia to be presented by Ms. Valcana Stoyanova*





16:00-16:15 COFFEE BREAK

16:15-17:00

REGIONAL EXAMINATION OF SEDIMENTS

- Dr. Charles Morgan, Planning Solutions Inc, Hawaii USA

TUESDAY, 15 DECEMBER, 2009

SESSION:

MODEL DEVELOPMENT AND KEY RESULTS CONTINUED



10:15-11:00

BATHYMETRY AND SEDIMENTATION IN COMRA'S CONTRACT AREA

- Prof. Huaiyang Zhou, School of Ocean and Earth Science
Tongji University, Shanghai, PR China

11:00-11:30

COFFEE BREAK

11:30-12:15

RESULTS OF BIOGEOCHEMICAL MODELLING

- Dr. Charles Morgan, Planning Solutions Inc, Hawaii USA



12:15-13:00

RELATION BETWEEN NODULE COVERAGE, MORPHOLOGY AND DISTRIBUTION

- Ms. Valcana Stoyanova, Interoceanmetal Joint Organization, Poland

13:00-14:00

LUNCH BREAK

14:00-14:45

APPRAISAL OF NODULE RESOURCE POTENTIAL USING GIS AND GEOSTATISTICS

- Dr. J.K Kang KORDI, Korea (to be presented by Dr Charles Morgan)



14:45-15:30

SPATIAL DECISION SUPPORT SYSTEM, FUZZY LOGIC MODELLING AND ILLUSTRATIVE MAPS OF POTENTIAL NODULE RESOURCES IN THE CCZ

- Prof. Huaiyang Zhou, School of Ocean and Earth Science
Tongji University, Shanghai, PR China

15:30-16:00

COFFEE BREAK

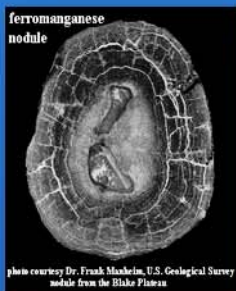
SESSION:

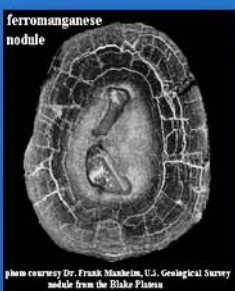
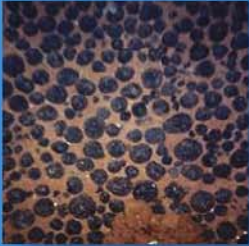
REVIEW OF THE GEOLOGICAL MODEL AND PROSPECTOR'S GUIDE

16:00 -16:45

REVIEW OF GEOLOGICAL MODEL AND PROSPECTOR'S GUIDE-2

- Prof. Peter Halbach, Free University, Berlin., Germany





WEDNESDAY, 16 DECEMBER, 2009

SESSION: WORKSHOP RECOMMENDATIONS

10:00- 13:00 (WITH COFFEE BREAK)

Participants will break in to 4 working groups. Working groups will meet in parallel sessions (Coffee Break 11:15-11:45). Each group will elect a chairman at the start of its deliberations.

- Working Group 1- Extension of the model to other world oceans: Indian, Atlantic etc.
- Working Group 2- Exploration technology
 - Exploration, analytical methods, Mapping, visualization, ROV/AUV etc.
- Working Group 3- Environmental component
 - Research Plan, Time series, site plan and standardized data sets
- Working Group 4- Education and outreach of the results of the Model studies

13:00- 14:00 LUNCH BREAK

14:00-17:00 WORKING GROUP DELIBERATIONS CONTINUE WITH COFFEE BREAK FROM 15:00-15:30

THURSDAY, 17 DECEMBER 2009

10:00- 11:30 PLENARY SESSIONS ON DELIBERATIONS OF THE WORKING GROUPS

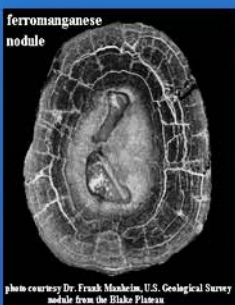
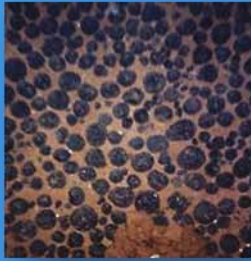
11:30-11:45 COFFEE BREAK

11:45-13:00 Finalization of Working Group Reports

13:00-14:00 LUNCH BREAK

14:00- 15:00 REPORT OF WORKING GROUPS

15:00- 15:30 COFFEE BREAK



Concluding Session

15:30-17:00

- Remarks from LTC Members (Dr. Sudhakar, Dr. Sandor Muslow, Dr. Elva Escobar and Mr. Baïdy Deine)
- Remarks FROM CONTRACTOR REPRESENTATIVES
- Remarks from observers. Dr. Kaiser De Souza, Mr. Libbey and others
- Workshop recommendations
- Concluding Remarks of the Secretary-General.